



Aluminum Anode Compositions



Galvotec's accomplishment regarding on time deliveries and quality workmanship is due to our competent staff with many years of experience in manufacturing anodes of all types.

Galvotec's laboratory is fully equipped with state-of-the-art equipment. All products are tested and inspected prior to shipping. Chemical analyses are run on each heat prior to casting.

Galvotec aluminum anodes can be manufactured with a wide variety of core configurations, to accommodate different anode specifications and applications. If your requirements are for a new structure, or to retrofit an existing platform, Galvotec can manufacture any anode to your requirements.

Compositions of Aluminum Alloys

ELEMENT	GALVOTEC III ¹	GALVOTEC CW III ²	MIL-A-24779 (SH)
Zn	2.80 - 6.50%	4.75 - 5.75%	4.0 - 6.5
In	0.010 - 0.02%	0.016 - .020%	0.014 - 0.020
Si	0.08 - 0.2%	0.080 - .12%	0.08 - 0.20
Cu	0.006% Max.	0.003% Max.	0.004 Max.
Fe	0.120% Max.	0.060% Max.	0.090 Max.
Hg	-	-	0.001 Max.
Cd	0.002% Max.	0.002% Max.	-
OTHERS EA.	0.02% Max.	0.02% Max.	0.020 Max.
OTHERS TOTAL	0.05% Max.	0.05% Max.	0.10 Max.
Aluminum	BALANCE	BALANCE	BALANCE

Electrochemical Properties

	GALVOTEC III	GALVOTEC CW III
Electrode Potential (Cu/Cu SO ₄)	-1.15v	-1.15v
Nominal Efficiency	85%	85%
Nominal Ampere Hours/Pound	1150	1150

- NOTE:**
1. GALVOTEC III Alloy has been used in multiple projects around the world for over 20 years.
 2. GALVOTEC CW III has been the preferred composition of the major oil and offshore operator companies for deep and cold water applications..
 3. Refer to our website www.galvotec.com for project references.



Aluminum Hull Anodes



For use on hulls of ships, tugs, barges, etc., operating in seawater. All anodes are faired or tapered to minimize turbulence. Anodes are produced with mild steel core straps.

Note – Internal Cores are All Continuous Mild Steel.

GA-A-1-29H

Wt./Anode

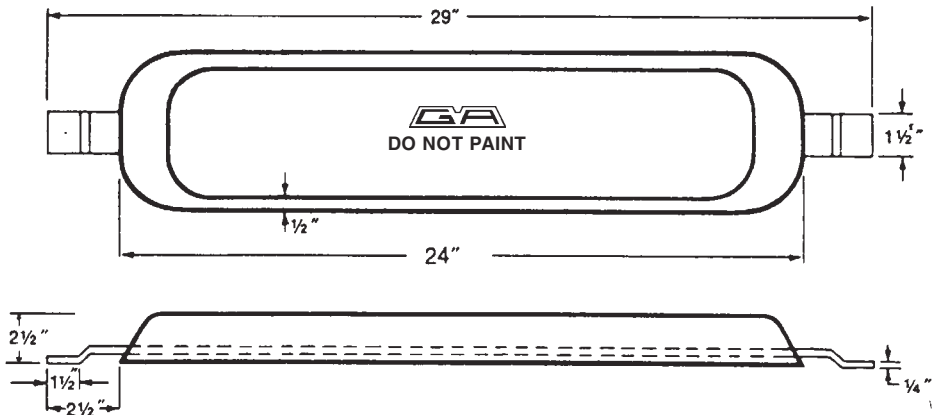
29 lbs.
13.2 Kg

Nom. Dimensions

5" x 2 1/2" x 24"
127mm x 64mm x 619mm

Current Rating

4 Ampere – Years



GA-A-1-23H

Wt./Anode

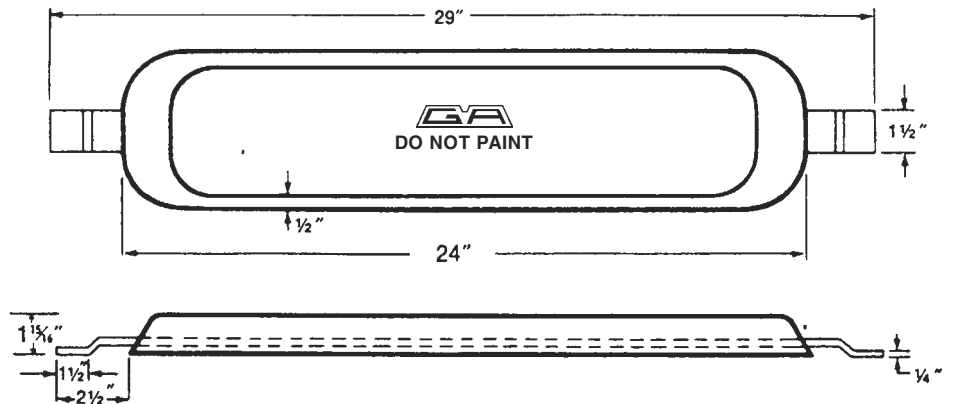
23 lbs.
10.4 Kg

Nom. Dimensions

5" x 1 15/16" x 24"
127mm x 49mm x 610mm

Current Rating

3 Ampere – Years



GA-A-2-15H

Wt./Anode

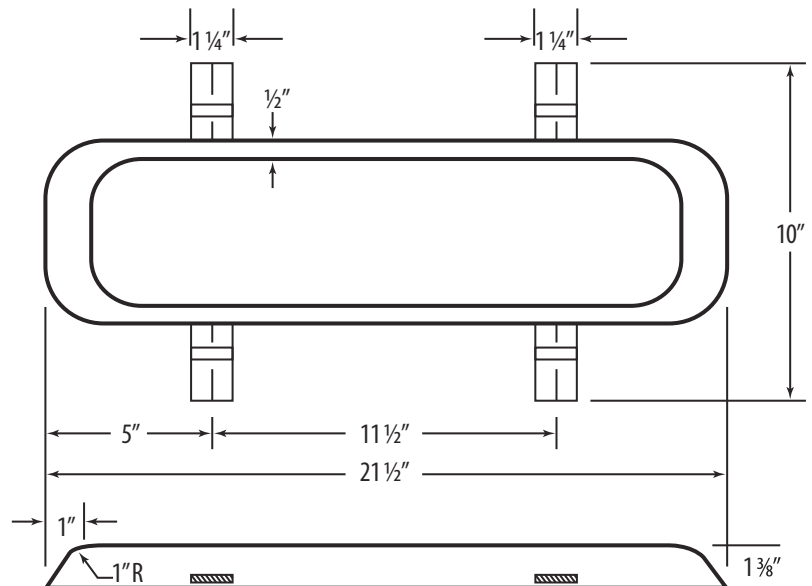
15 1/2 lbs.
7.0 Kg

Nom. Dimensions

5" x 1 3/8" x 21 1/2"
127mm x 35mm x 546mm

Current Rating

2 Ampere – Years



Note: Also available – GA-A-1-15H same as GA-A-2-15H except has single longitudinal strap. 3/16" x 1 1/4"



Aluminum Hull Anodes



For use on hulls of ships, tugs, barges, etc., operating in seawater. All anodes are faired or tapered to minimize turbulence. Anodes are produced with mild steel core straps.

Note – Internal Cores are All Continuous Mild Steel.

GA-A-2-10H

Wt./Anode

10 lbs.

4.5Kg

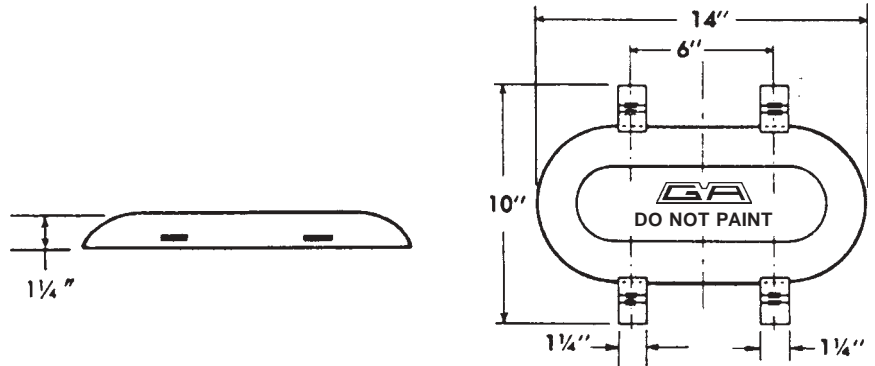
Nom. Dimensions

6 1/2" x 1 1/4" x 14"

165mm x 32mm x 356

Core Size

3/16" x 1 1/4"



GA-A-1-12H

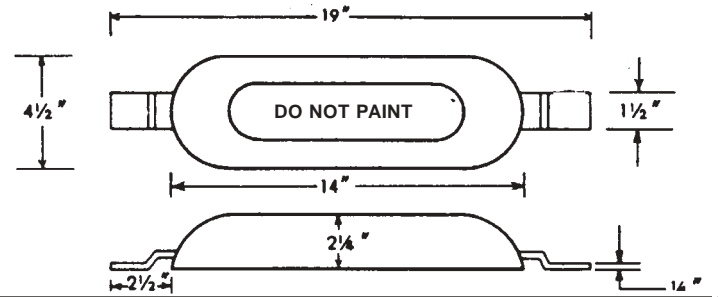
Wt./Anode

12 lbs. 5.4 Kg

Nom. Dimensions

4 1/2" x 2 1/4" x 14"

57mm x 114mm x 356mm



GA-A-1-20H

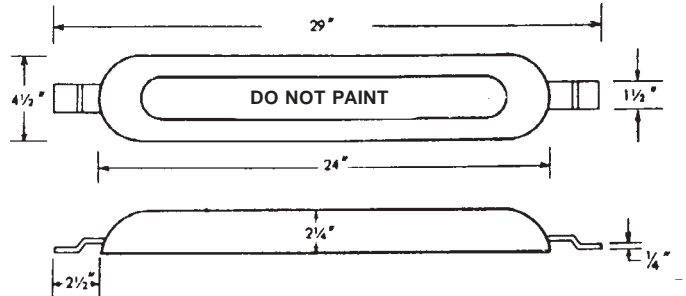
Wt./Anode

20 lbs. 9.1 Kg

Nom. Dimensions

4 1/2" x 2 1/4" x 24"

610mm x 57mm x 114mm



GA-A-2-32H

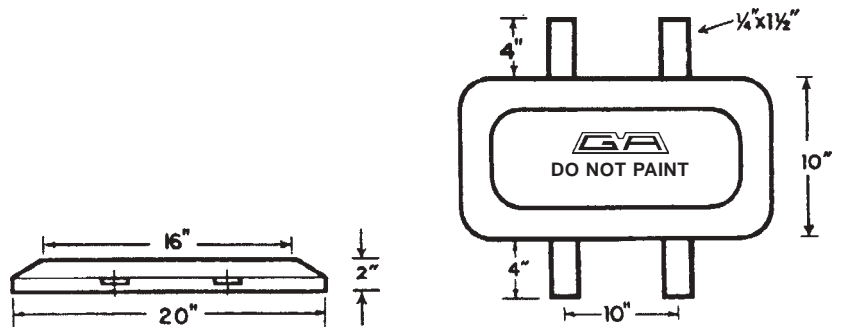
Wt./Anode

32 lbs. 14.5 Kg

Nom. Dimensions

10" x 2" x 20"

254mm x 51mm x 508mm



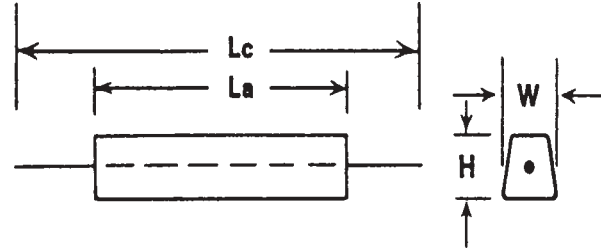


Aluminum Ballast Tank Anodes

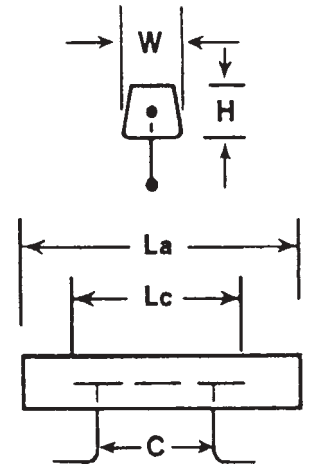


Anode and core arrangements approved by the American Bureau of Shipping, and Lloyd's Register.
Special anode sizes available on request.

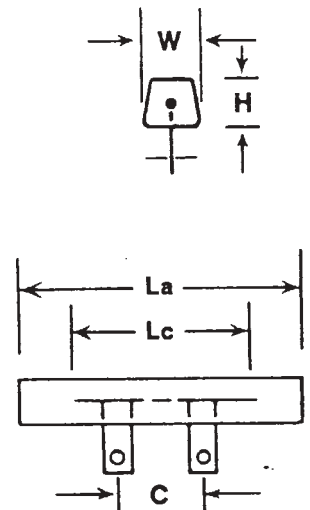
Product Number	Nom. Wt.		W		H		La		Lc	
	Lbs	Kg	in	mm	in	mm	in	mm	in	mm
GA-ABT-21	21	9.5	2	51	2	51	48	1219	60	1524
GA-ABT-26	26	11.8	2	51	2	51	60	1524	72	1829
GA-ABT-30	30	13.6	2 1/2	64	2 1/2	64	48	1219	60	1524
GA-ABT-39	39	17.7	2 1/2	64	2 1/2	64	60	1524	72	1829
GA-ABT-48	48	21.8	3	76	3	76	48	1219	60	1524



Product Number	Nom. Wt.		W		H		La		Lc		C	
	Lbs	Kg	in	mm	in	mm	in	mm	in	mm	in	mm
GA-ABT-B21	21	9.5	2	51	2	51	48	1219	36	914	24	610
GA-ABT-B26	26	11.8	2	51	2	51	60	1524	48	1219	30	762
GA-ABT-B30	30	13.6	2 1/2	64	2 1/2	64	48	1219	36	914	24	610
GA-ABT-B39	39	17.7	2 1/2	64	2 1/2	64	60	1524	48	1219	30	762
GA-ABT-B48	48	21.8	3	76	3	76	48	1219	36	914	24	610

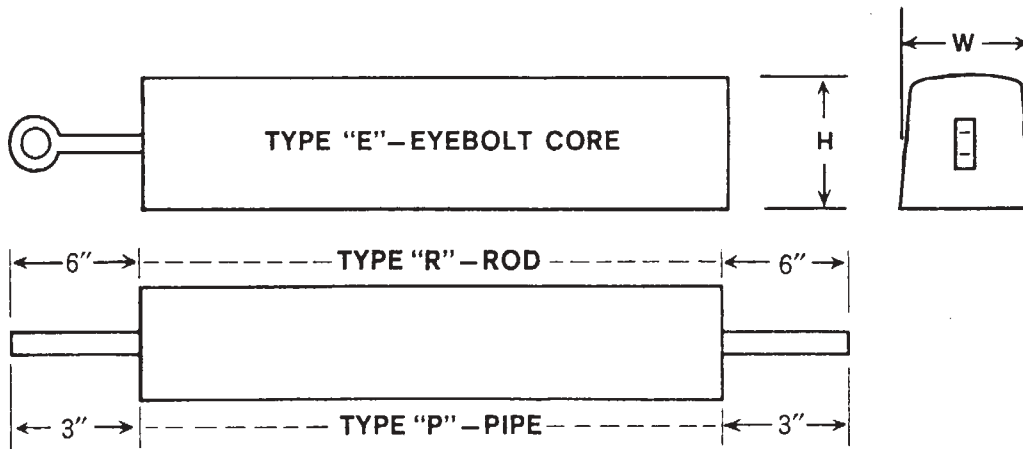


Product Number	Nom. Wt.		W		H		La		Lc		C	
	Lbs	Kg	in	mm	in	mm	in	mm	in	mm	in	mm
GA-ABT-C21	21	9.5	2	51	2	51	48	1219	36	914	24	610
GA-ABT-C26	26	11.8	2	51	2	51	60	1524	48	1219	36	914
GA-ABT-C30	30	13.6	2 1/2	64	2 1/2	64	48	1219	36	914	24	610
GA-ABT-C39	39	17.7	2 1/2	64	2 1/2	64	60	1524	48	1219	36	914
GA-ABT-C48	48	21.8	3	76	3	76	48	1219	36	914	24	610





Aluminum Pier & Piling Anodes



Unless otherwise specified, the following steel core size will be supplied:

- Type "E" – 1/2" Eyebolt
- Type "P" – STD 3/4" Pipe
- Type "R" – 1/2" Dia. Rod

Product Number	Nom. Wt.		W		H		L		Core Type
	Lbs.	Kg	in	mm	in	mm	in	mm	
GA-A-P-240	240	108.9	10	254	10	254	24	610	E,P, or R
GA-A-P-175	175	79.4	7	178	7	178	36	914	"
GA-A-P-120	120	54.4	10	254	10	254	12	305	"
GA-A-P-120-1	120	54.4	7	178	7	178	24	610	"
GA-A-P-120-2	120	54.4	5	127	5	127	48	1219	"
GA-A-P-100	100	45.4	4	107	4	107	60	152	"
GA-A-P-90	90	40.8	7	178	7	178	18	457	"
GA-A-P-90-1	90	40.8	5	127	5	127	36	914	"
GA-A-P-60	60	27.2	7	178	7	178	12	305	"
GA-A-P-60-1	60	27.2	5	127	5	127	24	610	"
GA-A-P-60-2	60	27.2	4	107	4	107	38	965	"
GA-A-P-30	30	13.6	3	76	3	76	34	864	"

Other anodes for seawater applications can be furnished with a wide variety of steel cores, and to the following range of dimensions:

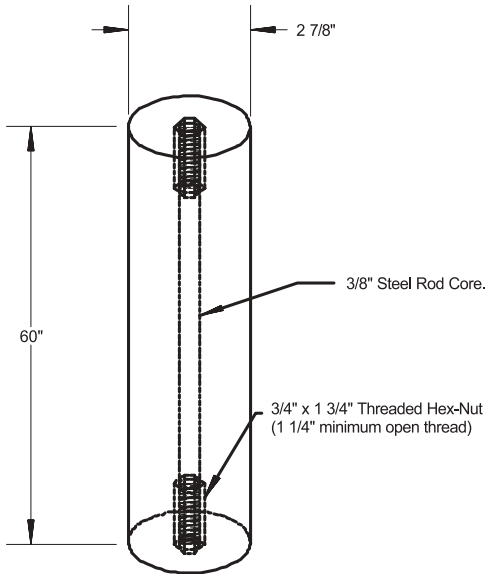
Cross-Section		Length		Approx. Wt/Length	
in	m	in	m	lb./ft.	Kg/m
2 x 2	0.05 x 0.05	12 - 60	0.3 - 1.5	4.8	7.1
2 1/2 x 2 1/2	0.06 x 0.06	12 - 60	0.3 - 1.5	7.5	11.2
3 x 3	0.08 x 0.08	12 - 60	0.3 - 1.5	10.8	16.1
4 x 4	0.10 x 0.10	12 - 66	0.3 - 1.7	19.2	28.6
5 x 5	0.13 x 0.13	12 - 72	0.3 - 1.8	30.0	44.6
12 x 12	0.30 x 0.30	12 - 24	0.3 - 0.6	172.8	257.1

Special anode sizes available on request.

Note – Internal Cores are All Continuous Mild Steel.



Aluminum Heater Treater Anodes



Core Type
3/4" Threaded Rod
1/2" Eyebolt
3/4" Coupling

Special anode sizes available on request.

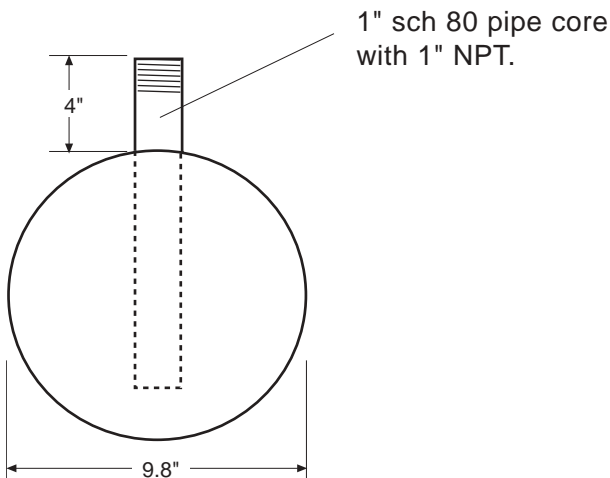
Anode Type	"L" Dimension		Anode Weight	
	in	mm	lbs	Kg
GA-A 3" Dia. x 30	30	762	18.5	8.4
GA-A 3" Dia. x 60	60	1524	37	16.8
GA-A 3.625" Dia. x 60	60	1524	55.0	25.0

GA-A-HS-47

Bowling Ball

Anode supplied with 1" sch 80 Half Collar.

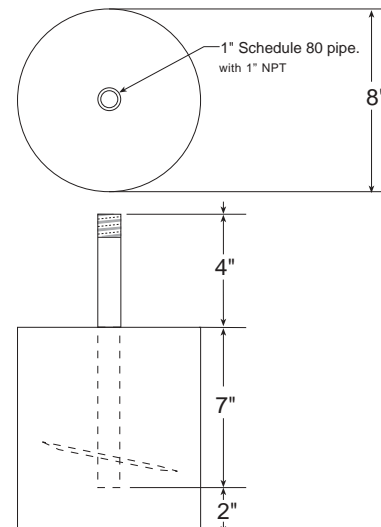
Anode Weight	
lbs	Kg
47	21.3



GA-A-HFT-44

Anode supplied with 1" sch 80 Half Collar.

Anode Weight	
lbs	Kg
44	20





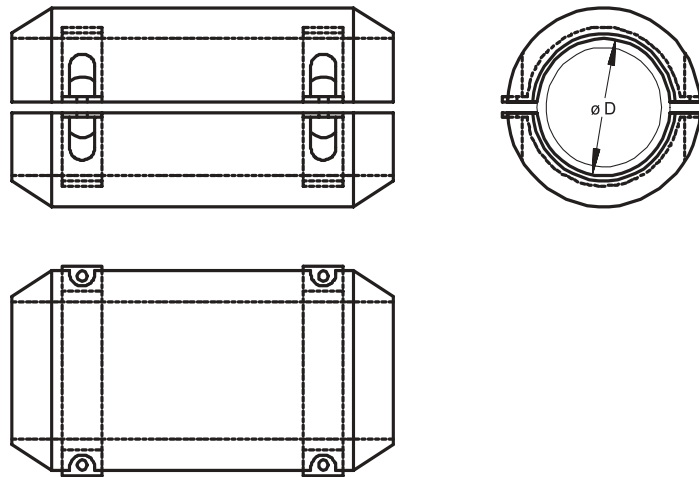
Aluminum Bracelet Anodes



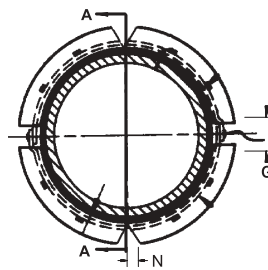
Galvotec has produced all sizes of aluminum bracelets ranging from 1 1/2" O.D. to 48" O.D. including cast-on bracelet sizes with great success. Galvotec's accomplishment regarding on time deliveries and quality workmanship is due to our competent staff with many years of experience in manufacturing anodes of all types.

Galvotec's laboratory is fully equipped with state-of-the-art equipment. All products are tested and inspected prior to shipping. Chemical analyses are run on each heat prior to casting.

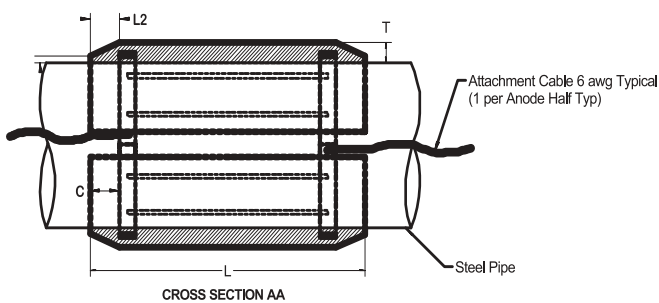
Bolt-on



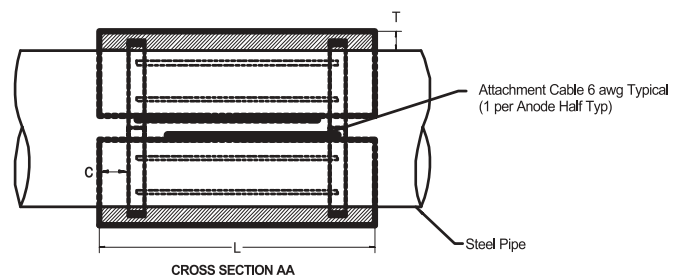
Weld-on



Tapered



Square End

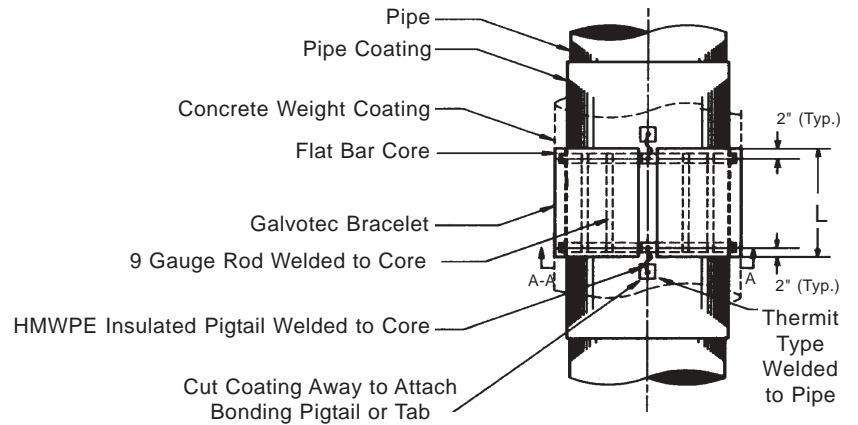
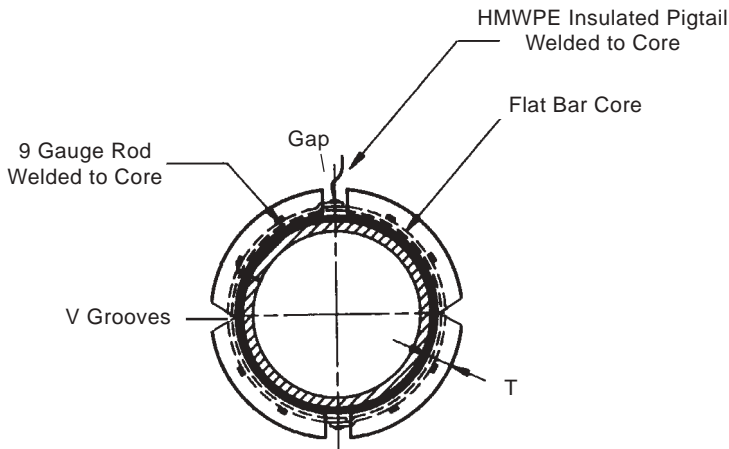
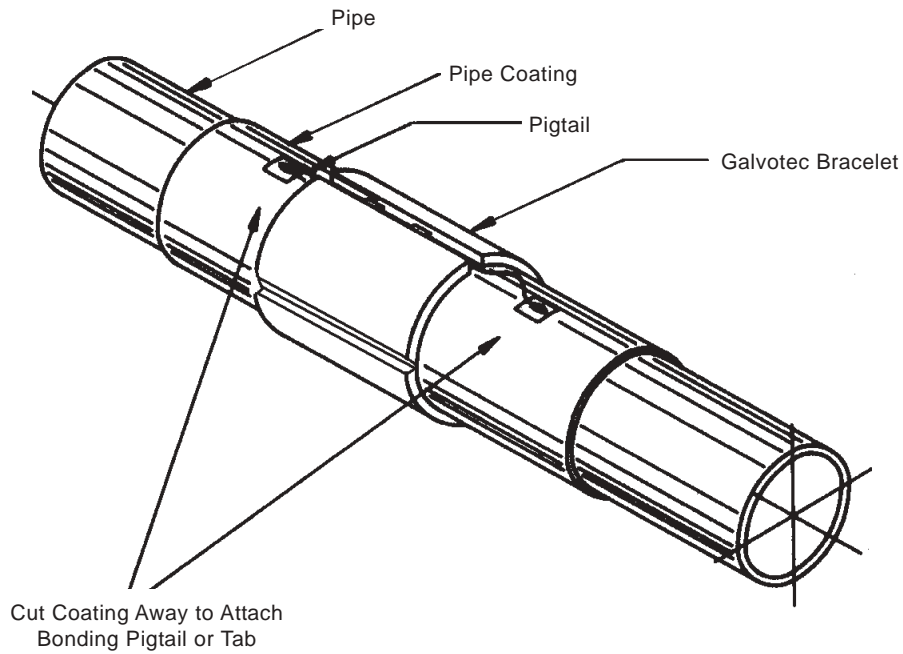




Aluminum Bracelet Anodes



Semi-Cylindrical for Concrete Coated Pipe





Aluminum Bracelet Anodes



Tapered Bracelets

Bracelet I.D.		TYPE *	THICKNESS		LENGTH		GAP		NET WT.		GROSS WT.	
in	mm		in	mm	in	mm	in	mm	lbs	kg	lbs	kg
2 3/8	60	T	1 1/4	32	12	305	1	25	11	5.0	13	5.9
3 1/2	89	T	1 1/4	32	12	305	1	25	15	6.8	17	7.7
4 1/2	114	T	1 1/2	38	12	305	1 1/4	32	23	10.4	25	11.3
4 1/2	114	T	1 1/2	38	19 1/4	489	1 1/4	32	46	20.9	50	22.7
5 9/16	141	T	1 1/2	38	15 5/8	397	1 1/4	32	37	16.8	40	18.1
6 5/8	168	T	1 1/2	38	11 1/4	286	1 1/2	38	32	14.5	36	16.3
6 5/8	168	TB2	1 1/2	38	13 1/2	343	3/4	19	32	14.5	36	16.3
6 5/8	168	T	1 1/2	38	13 5/8	346	1 1/2	38	36	16.3	40	18.1
6 5/8	168	T	1 1/2	38	18	457	1 1/4	32	60	27.2	64	29.0
6 5/8	168	T	1 3/4	44	21 1/4	540	1 1/2	38	74	33.6	78	35.4
6 5/8	168	ST	1 3/4	44	21 3/4	553	1 1/2	38	79	35.8	83	37.7
7 3/8	187	TB2	2 1/4	57	9 1/2	241	1	25	44	20.0	46	20.9
8 5/8	219	T	1 1/2	38	11 1/4	286	1 1/2	38	39	17.7	44	20.0
8 5/8	219	T	1 1/2	38	14 1/3	364	1 1/2	38	50	22.7	55	25.0
8 5/8	219	T	1 1/2	38	19.8	503	1 1/2	38	82	37.2	87	39.5
8 5/8	219	TB1	2 1/4	57	26 5/8	676	-	-	82	37.2	87	39.5
8 5/8	219	T	2 1/2	64	16	406	1 1/2	38	97	44.0	101	45.8
9 3/8	238	ST w/sockets	1 1/2	38	13 1/2	343	3	76	71	32.2	75	34.0
9 1/2	241	TB2	2 1/2	64	10 1/2	267	2	51	65	29.5	67	30.4
10 3/4	273	T	1 1/2	38	12.7	323	2	51	50	22.7	57	25.9
10 3/4	273	T	1 1/2	38	17 3/4	451	2	51	76	34.5	81	36.7
10 3/4	273	T	1 3/8	35	18 3/4	476	1 1/2	38	81	36.7	86	39.0
10 3/4	273	T	1 3/4	44	22	559	2	51	118	53.5	123	55.8
10 3/4	273	ST	1 3/4	44	22 1/4	565	2	51	124	56.3	131	59.4
10 3/4	273	TB1	3 1/4	83	24 1/2	622	-	-	131	59.4	145	65.8
10 3/4	273	ST	1 3/4	44	40	1016	2 1/2	64	227	103.0	237	107.5
12 3/4	324	T	1 1/2	38	14 3/4	375	2	51	74	33.6	84	38.1
12 3/4	324	T	1 1/2	38	16 3/4	425	1 1/2	38	94	42.64	100	45.4
12 3/4	324	ST	1 1/2	38	21.2	539	2 1/4	57	119	54.0	131	59.4
12 3/4	324	T w/sockets	1 1/2	38	23	584	4	102	125	56.7	131	59.4
12 3/4	324	T	2	51	19 5/8	498	2	51	149	67.6	162	73.5
12 3/4	324	ST1	1 3/8	35	31 1/2	800	2	51	165	74.8	177	80.3
13 9/16	345	T w/sockets	1 1/2	38	14	356	4	102	69	31.3	75	34.0
14	356	ST	1 1/2	38	21.1	536	2 1/4	57	131	59.4	144	65.3
14	356	ST	1 3/4	44	21 3/4	553	2	51	154	69.9	167	75.8
16	406	ST	1 3/4	44	20	508	2 1/4	57	169	76.7	184	83.5
16	406	ST1	1 1/2	38	32	813	2	51	210	95.3	225	102.0
16	406	ST	2	51	23	584	2 1/2	64	211	95.7	226	102.5
32	813	T	2	51	15 1/2	394	3	76	234	516	261	575
36	914	T	2 3/4	70	16 7/8	429	3	76	425	937	460	1014
40	1016	T	2	51	15 3/8	390	3	76	291	642	326	719

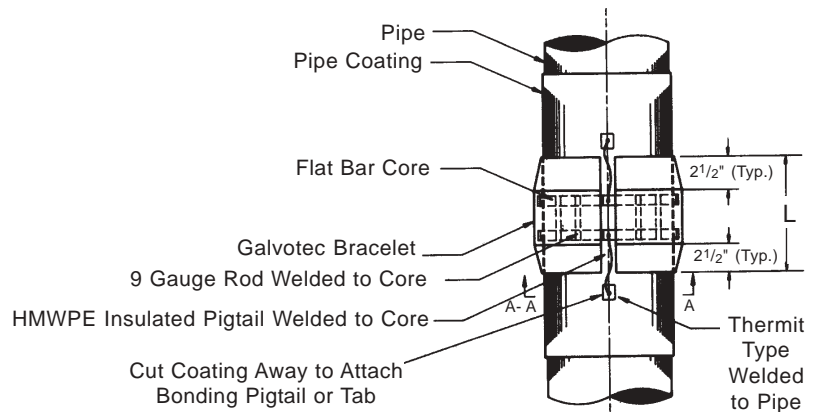
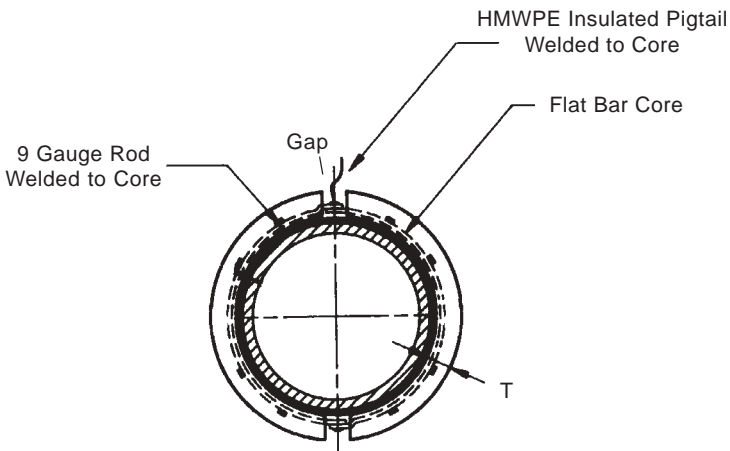
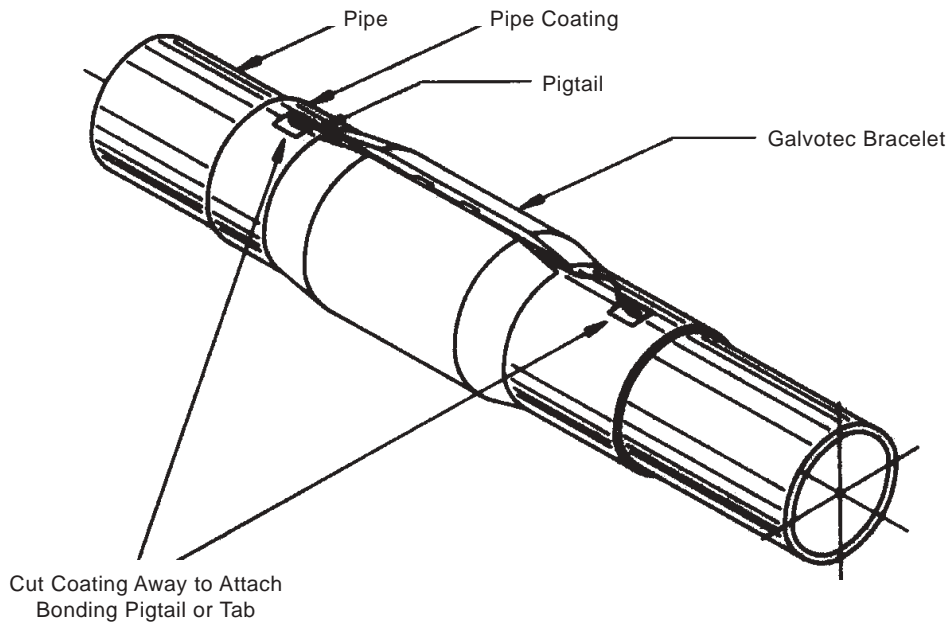
- * T=Tapered
- TB1=Tapered-Bolt-On (1 half only)
- TB2=Tapered-Bolt-On
- ST-Semi-Tapered
- ST1=Semi-Tapered (One End Only)



Aluminum Bracelet Anodes



Semi-Cylindrical Tapered Anodes





Aluminum Bracelet Anodes



Concrete Coated Pipe Bracelets

Bracelet I.D.		TYPE *	THICKNESS		LENGTH		GAP		NET WT.		GROSS WT.	
in	mm		in	mm	in	mm	in	mm	lbs	kg	lbs	kg
6 5/8	168	CC	1 1/2	38	14 1/2	368	3	76	41	18.6	45	20.4
6 7/8	175	IT	1 1/2	38	19 1/2	495	2	51	62	28.1	66	29.9
8 5/8	219	CC	1 1/2	38	8 1/2	216	2	51	30	13.6	33	15.0
8 5/8	219	CC	1 3/4	44	16 1/4	413	1 1/2	38	88	39.9	93	42.2
8 7/8	225	IT	1 1/2	38	16 1/2	419	2	51	63	28.6	67	30.4
10 3/4	273	CC	1 3/4	44	18 1/4	464	2 1/2	64	104	47.2	113	51.3
10 3/4	273	CC	1 3/4	44	22	559	2	51	118	53.5	128	58.1
10 3/4	273	CC	2	51	17 3/8	441	2	51	120	54.4	129	58.5
10 3/4	273	CC	2	51	21 3/4	553	2 1/2	64	136	61.7	146	66.2
11	279	IT	1 1/2	38	19 1/2	495	2	51	97	41.0	103	46.7
12	305	CC	1 1/2	38	16 3/8	416	2	51	90	40.8	100	45.4
12	305	CC	2	51	11 3/4	299	2	51	90	40.8	100	45.4
12 3/4	324	CC	1 1/8	29	16	406	2	51	68	30.8	81	36.7
12 3/4	324	CC	1 1/4	32	16	406	2	51	74	33.6	80	36.3
12 3/4	324	CC	1 1/8	29	21 1/2	546	1 1/2	38	96	43.6	109	49.4
12 3/4	324	CC	1 1/2	38	18.9	480	2	51	112	50.8	125	56.7
12 3/4	324	CC	1 3/4	44	18 1/2	470	3	76	130	59.0	143	64.9
12 3/4	324	CC	1 1/2	38	26 5/8	676	3	76	149	67.6	162	73.5
13	330	IT	1 1/2	38	16 1/2	419	2	51	91	41.3	96	43.6
14	356	CC	1 1/4	32	16 3/4	426	2	51	92	41.7	106	48.1
14	356	CC	2	51	21	533	3	76	177	90.3	190	86.2
16	406	CC	1 1/4	32	12	305	2	51	76	30.4	82	37.2
16	406	CC	1	25	24 3/4	629	1 1/2	38	128	58.1	144	65.3
16	406	CC	1 1/2	38	17 1/2	445	2	51	128	58.1	144	65.3
16	406	CC	1 1/4	32	25	635	1 1/2	38	155	70.3	171	77.6
16	406	CC	1 3/4	44	18 1/2	470	3	76	158	71.7	174	78.9
16	406	CC	1 1/2	38	21 3/4	553	2	51	168	76.2	184	83.5
16	406	CC	2 1/2	64	13.4	340	3	76	170	77.1	186	84.4
18	456	CC	1 5/8	41	17 3/16	437	4 3/8	111	138	62.6	155	70.3
18	457	CC	2 1/2	64	12 1/2	318	3	76	180	81.7	197	89.4
18	457	CC	1 3/4	44	19 1/2	495	2 1/2	64	188	85.3	205	93.0
18	457	CC	1 3/4	44	18.9	480	2	51	188	85.3	205	93.0
18	457	RT	2 3/4	70	24 7/8	632	4 3/8	111	216	98.0	233	105.7
18	457	CC	1 3/4	44	27 5/8	702	3	76	263	119.3	280	127.0
18	457	CC	2	51	21 1/4	540	2 1/2	64	238	108.0	256	116.1
20	508	CC	1 3/4	44	8 1/2	216	3 3/4	95	75	34.0	85	38.6
20	508	CC	1 3/4	44	9 1/2	241	2	51	100	45.4	119	54.0
20	508	CC	1 3/4	44	10 1/4	260	2	51	111	50.4	130	59.0
20	508	CC	1 1/2	38	16 1/2	419	3	76	143	65.0	161	73.0
20	508	CC	1 5/8	41	16	406	2 1/2	64	157	71.2	175	79.4
20	508	CC	2 1/2	64	10	254	2	51	160	72.6	178	80.7
20	508	CC	1 7/8	48	14 1/4	362	3	76	161	73.0	179	81.2
20	508	CC	2 1/4	57	12 3/4	324	2 1/2	64	172	78.0	190	86.2

Continued next page



Aluminum Bracelet Anodes



Concrete Coated Pipe Bracelets (Continued)

Bracelet I.D.		TYPE *	THICKNESS		LENGTH		GAP		NET WT.		GROSS WT.	
in	mm		in	mm	in	mm	in	mm	lbs	kg	lbs	kg
20	508	CC	1.9	48	16 1/4	413	3	76	189	85.7	207	93.9
20	508	CC	1 5/8	41	21 1/4	540	2 1/2	6.4	190	86.2	209	94.8
20	508	CC	2 1/2	64	14	356	2 1/2	64	206	93.4	225	102.0
20	508	CC	1 3/4	44	19 3/4	502	2 1/2	64	209	94.8	228	103.4
20	508	CC	2	51	28 5/8	727	3	76	352	159.7	370	167.8
24	610	CC	1 1/4	32	13	330	2	51	116	52.6	139	63.1
24	610	CC	1 3/4	44	11 1/8	283	3	76	141	64.0	164	74.4
24	610	CC	1 3/4	44	14 1/8	359	3	76	177	80.3	200	90.7
24	610	CC	2 3/4	44	8 3/4	222	3	76	177	80.3	189	90.7
24	610	CC	3 3/4	95	6	152	3 1/2	89	177	80.3	189	90.7
24	610	CC	1 1/2	38	17	432	2 1/2	64	186	84.4	209	94.8
24	610	CC	2 1/8	54	11 1/4	286	2 1/2	64	188	85.3	211	95.7
24	610	CC	2	51	13.1	333	2 1/2	64	193	87.5	216	98.0
24	610	CC	2 1/2	64	10 7/8	276	3	76	200	90.7	223	101.2
24	610	CC	1 3/4	44	18 1/2	470	3	76	233	105.7	256	116.1
24	610	CC	2	51	16	406	3	76	233	105.7	256	116.1
24	610	CC	3 1/8	79	10	254	2 1/2	64	240	106.9	263	119.3
24	610	CC	3	76	10 5/8	270	3	76	240	106.9	263	119.3
24	610	CC	2	51	17	432	3	76	254	115.2	277	125.7
24	610	CC	3 1/8	79	10 3/4	273	2	51	265	120.2	288	130.6
24	610	CC	1 7/16	36.5	28 3/4	730	3	76	298	135.2	321	145.6
24	610	CC	2	51	19.6	498	3	76	287	130.2	310	140.6
24	610	CC	1 3/4	44	24 1/4	616	3	76	315	142.9	338	153.3
24	610	CC	2	51	35 3/4	908	3	76	516	234.1	539	244.5
24	610	CC	2 3/8	60	33 1/4	845	3	76	595	270.4	618	280.3
25	635	CCB	3 1/2	89	4 1/2	114	2	51	123	55.8	¥	¥
25	635	CCB	4 1/2	114	5	127	2	51	187	84.8	¥	¥
26	635	CC	1 9/16	41	21 11/16	551	5	127	252	114.3	276	125.2
30	762	CC	2	51	10	254	3	76	180	81.7	205	93.0
30	762	CC	2 3/4	70	8 1/2	216	3	76	217	98.4	233	105.7
30	762	CC	2 1/4	57	10 3/4	273	4	102	220	99.8	249	113.0
30	762	CC	2	51	12 1/2	318	3	76	233	105.7	258	117.0
30	762	CC	2 1/2	64	13.50	340	3	76	310	140.6	335	152.0
30	762	CC	2 1/4	57	15 1/2	394	3	76	323	146.5	348	157.9
36	914	CC	2	51	15 1/4	387	3	76	342	155.1	377	171.0
36	914	CC	2 1/4	57	15 1/8	384	3	76	383	173.7	418	189.6
36	914	CC	3	76	12.6	320	4	102	420	190.5	455	206.4
36	914	CC	3	76	36 3/4	934	3	76	1264	573.4	1315	596.5
40	1016	CC	3 1/4	83	28 3/4	730	4	102	1168	529.8	1224	555.2
40	1016	CC	4 1/4	108	21 5/8	549	4	102	1179	534.8	1235	560.2

*CC=Concrete Coated (square Bracelet)

IT= Internally Tapered Bracelet

TR= Reversely Tapered Bracelet

CCB= Square Bolt-On Bracelet

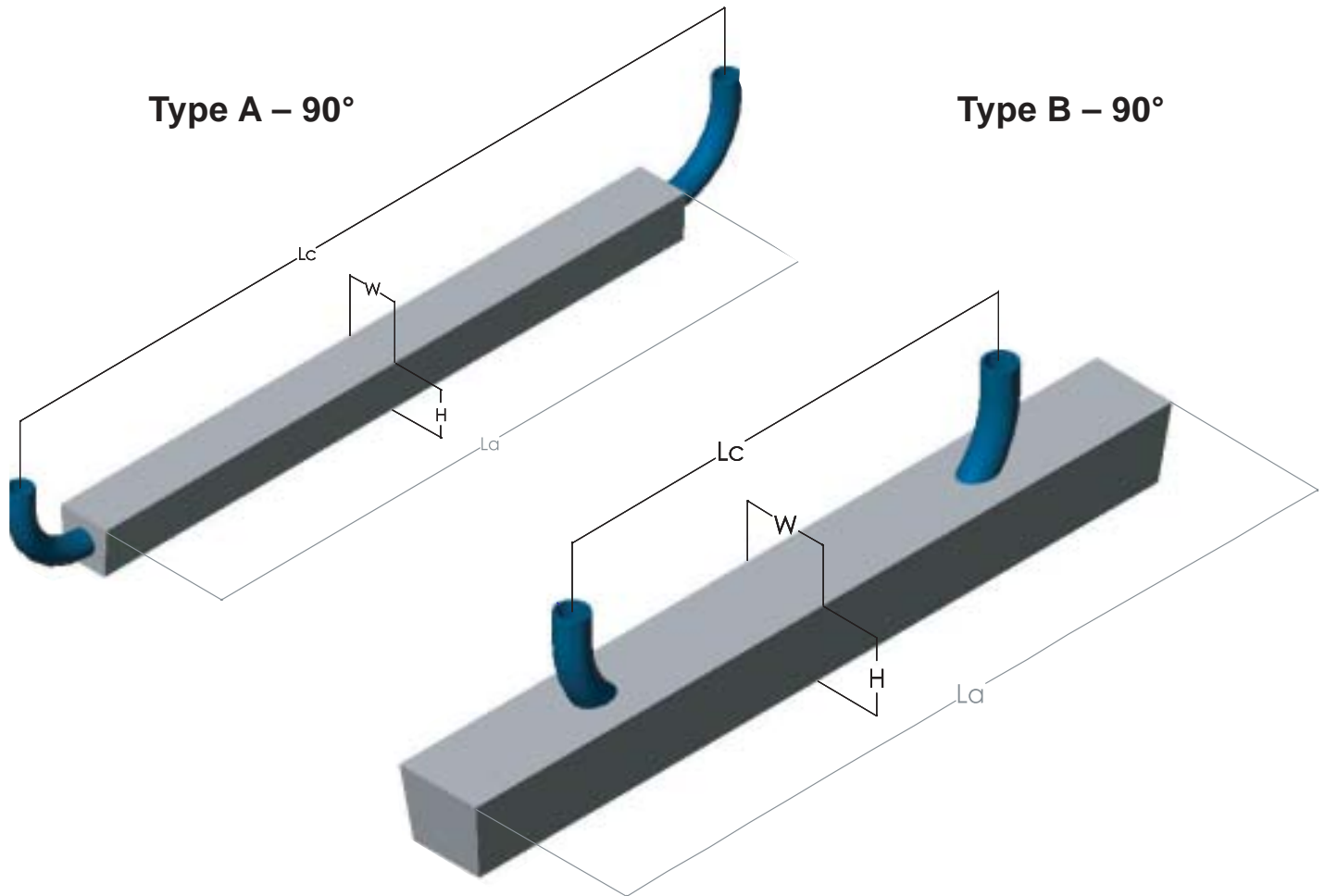
¥ Variable due to bolt-on assembly



Aluminum Platform/Structural Anodes



Platform Anode with 90° Bent Pipe Core



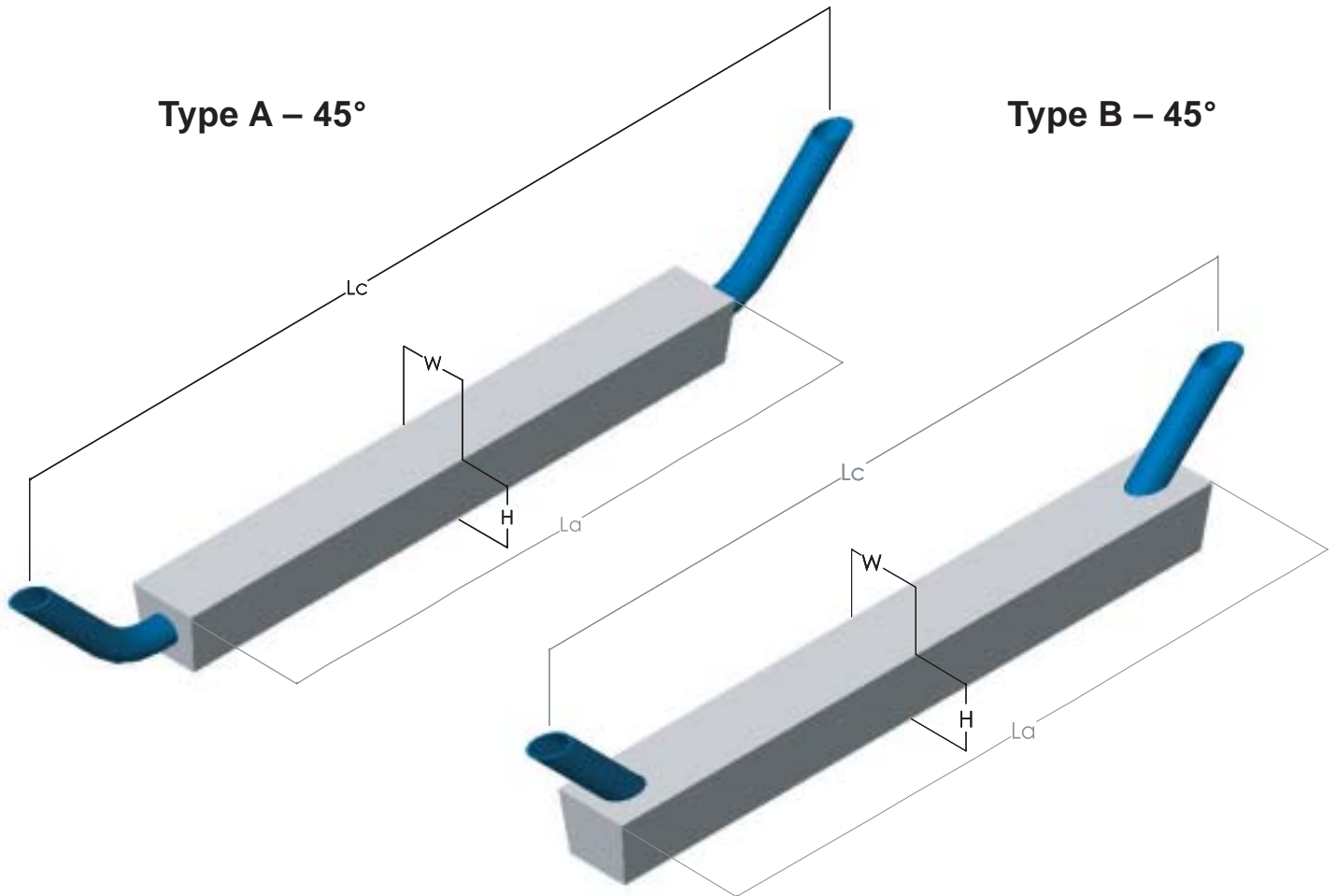
Net Wt.		W		H		La		Anode Type	Lc		Core Specification Pipe Size
lbs	Kg	in	mm	in	mm	ft.	mm		ft.	mm	
325	147.4	6	160	6	163	8	2438	A	10.0	3048	2" Schedule 80
								B	7.0	2134	2" Schedule 80
411	222.3	7	208	7	188	8	2438	A	11.0	3353	3" Schedule 80
								B	7.0	2134	3" Schedule 80
540	244.9	8	208	8	203	8	2438	A	11.0	3353	3" Schedule 80
								B	7.0	2134	3" Schedule 80
725	328.9	9	249	9	239	8	2438	A	10.7	3261	4" Schedule 80
								B	7.0	2134	4" Schedule 80
1050	476.3	9	229	9	249	12	3658	A	13.7	4176	4" Schedule 80
								B	10.0	3048	4" Schedule 80
1250	567.0	10	249	10	267	12	3658	A	13.7	4176	4" Schedule 80
								B	10.0	3048	4" Schedule 80



Aluminum Platform/Structural Anodes



Platform Anode with 45° Bent Pipe Core



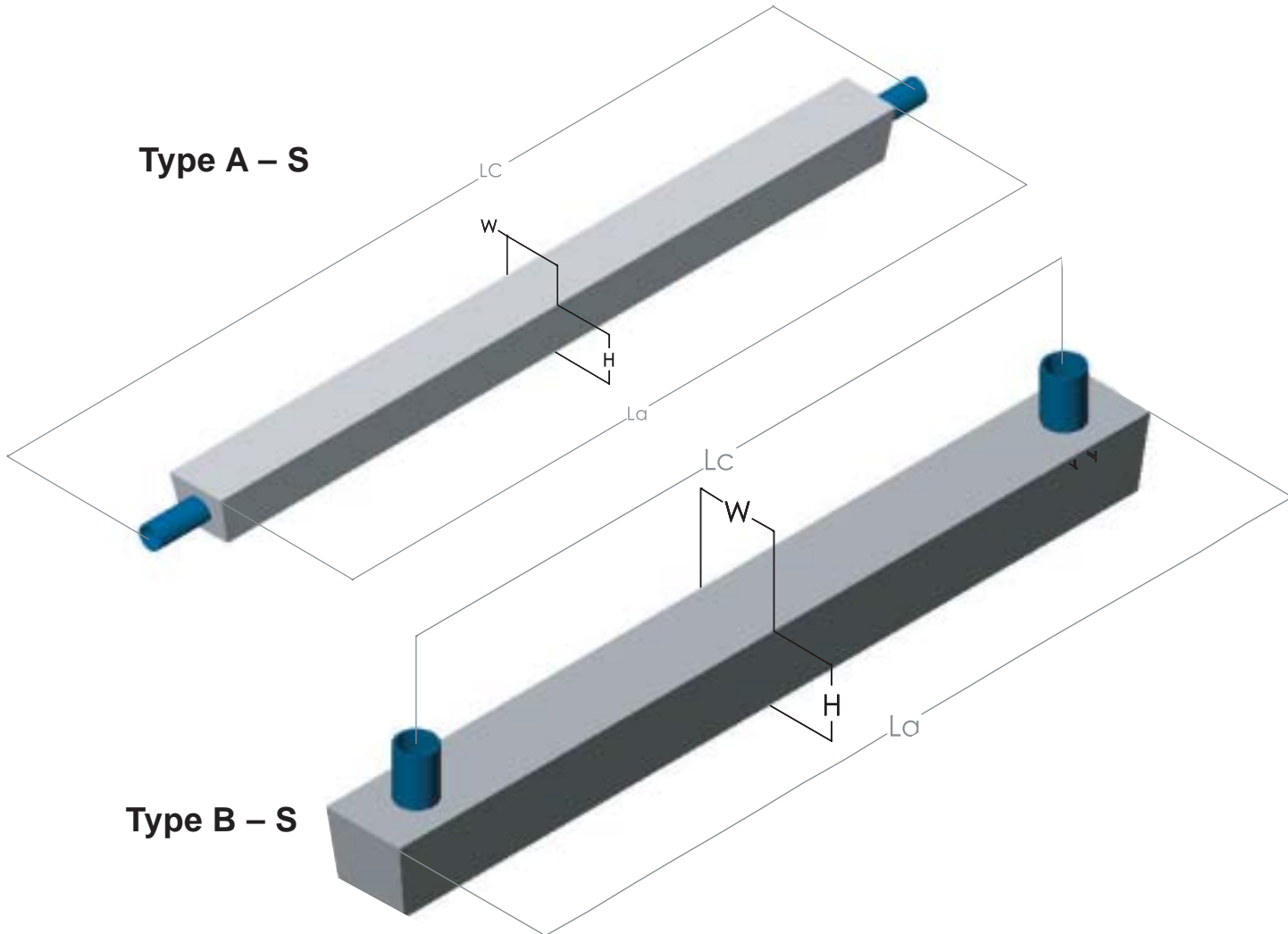
Net Wt.		W		H		La		Anode Type	Lc		Core Specification Pipe Size
lbs	Kg	in	mm	in	mm	ft.	mm		ft.	mm	
325	147.4	6	160	6	163	8	2438	A	11.0	3353	2" Schedule 80
								B	9.0	2743	2" Schedule 80
411	222.3	7	208	7	188	8	2438	A	11.5	3505	3" Schedule 80
								B	9.0	2743	3" Schedule 80
540	244.9	8	208	8	203	8	2438	A	11.5	3505	3" Schedule 80
								B	9.0	2743	3" Schedule 80
725	328.9	9	249	9	239	8	2438	A	12.0	3658	4" Schedule 80
								B	9.0	2743	4" Schedule 80
1050	476.3	9	229	9	248	12	3658	A	16.0	4877	4" Schedule 80
								B	13.0	3962	4" Schedule 80
1250	567.0	10	249	10.8	267	12	3658	A	16.0	4877	4" Schedule 80
								B	13.0	3962	4" Schedule 80



Aluminum Platform/Structural Anodes



Platform Anode with Straight Core



Net Wt.		W		H		La		Anode Type	Lc		Core Specification Pipe Size
lbs	Kg	in	mm	in	mm	ft.	mm		ft.	mm	
325	147.4	6	160	6.4	163	8	2438	A	10	3048	2" Schedule 80
								B	5	1524	3"x3"x1/4" Internal Angle + 2" Schedule 80
411	222.3	8	208	7.4	188	8	2438	A	10	3048	3" Schedule 80
								B	5	1524	3"x4"x1/4" Internal Angle + 2" Schedule 80
540	244.9	8	208	8.0	203	8	2438	A	10	3048	3" Schedule 80
								B	5	1524	3"x4"x1/4" Internal Angle + 3" Schedule 80
725	328.9	9	249	9.4	239	8	2438	A	10	3048	4" Schedule 80
								B	5	1524	3"x5"x1/4" Internal Angle + 4" Schedule 80
1050	476.3	9	229	9.75	248	12	3658	A	14	4267	4" Schedule 80
								B	8	2438	3"x5"x5/16" Internal Angle + 4" Schedule 80
1250	567.0	10	249	10.5	267	12	3658	A	14	4267	4" Schedule 80
								B	8	2438	3"x5"x5/16" Internal Angle + 4" Schedule 80